

Remote Desktop (Rustdesk Pro)

- [Creating an Account](#)
- [Using the Desktop App](#)

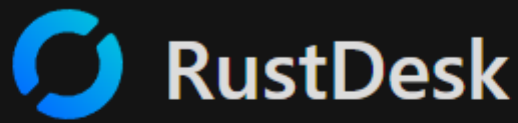
Creating an Account

Step 1

Go to the [web console](#) to create your account.

Step 2

Click Continue with Authentik.



RustDesk Console



Remember me

[Forgot Password ?](#)

Login

Or



Continue with Authentic

Step 3

Log in as usual using our authentication service.

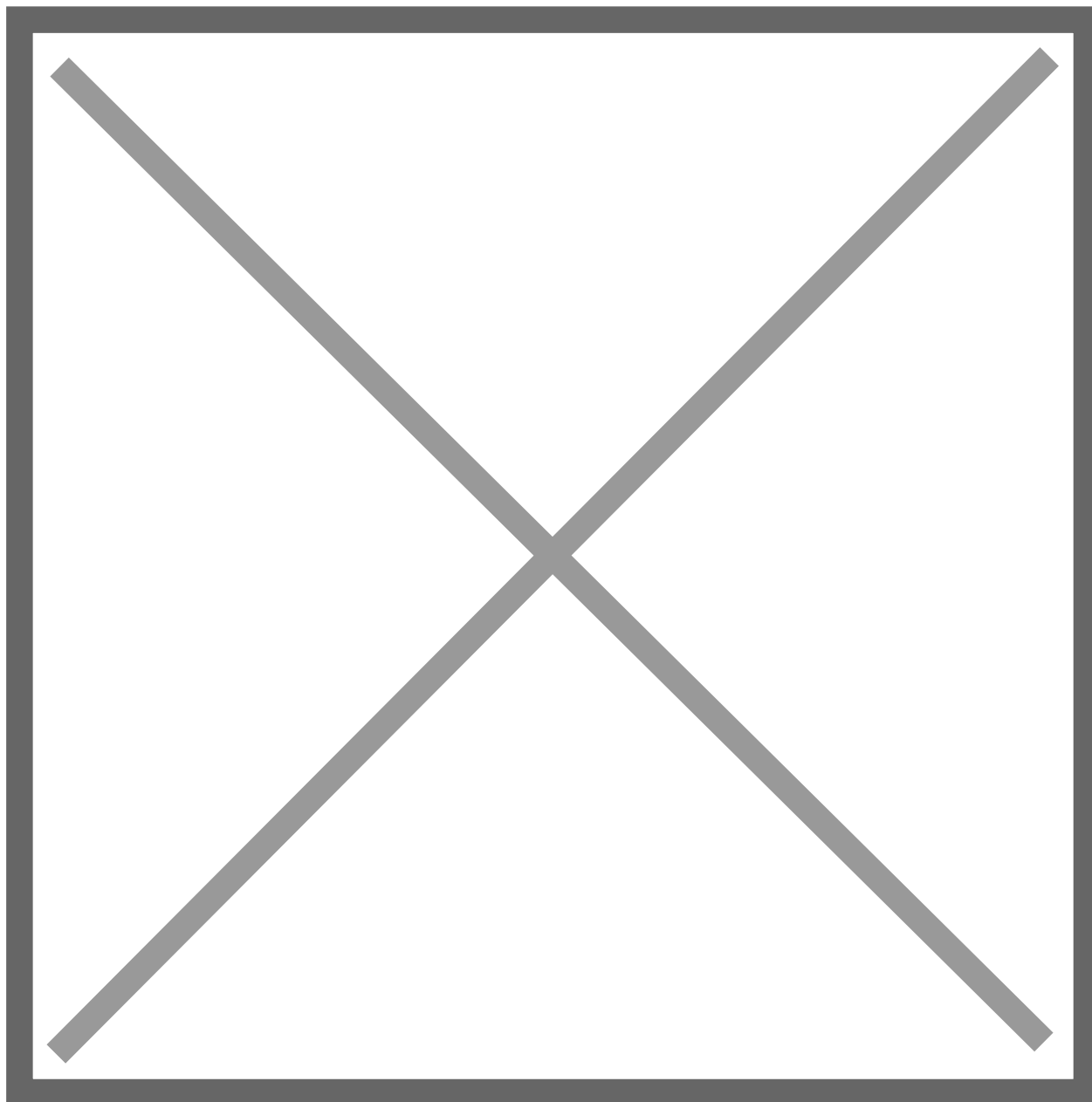
Step 4

Congrats! Now let one of your admins you need access to the machines and please be patient.

Using the Desktop App

Setup Tutorial

Getting Started with Rust Desk for Remote Access - Watch Video



Step 1

First step is to install the desktop client on your machine. Visit the [official repository](#) and download the correct version.

If you have an M1, M2, etc. Apple machine, select ARM64

Architecture	Windows	Ubuntu	Mac	Android	Flatpak	iOS	Web
x86-64 (64-bit)	EXE MSI	Download	Download	Universal	Download		Go
AArch64 (ARM64)		Download	Download	Download	Download	App Store	
ARMv7 (32-bit)		Download		Download			
x86-32 (32-bit)	EXE						

Step 2

Once downloaded, install the application.

Step 3

Open the application. You'll be greeted by the interface. On the left-hand side, you'll see some prompts to allow permissions for certain features for the software. Go ahead and go through the prompts to accept them, allowing the software the permissions needed for remote desktop. Your interface should look like this when all permissions have been fixed:



Home



Settings

Your Desktop

Your desktop can be accessed with this ID and password.

ID



One-time password

-



Control

140



Shared

Tags

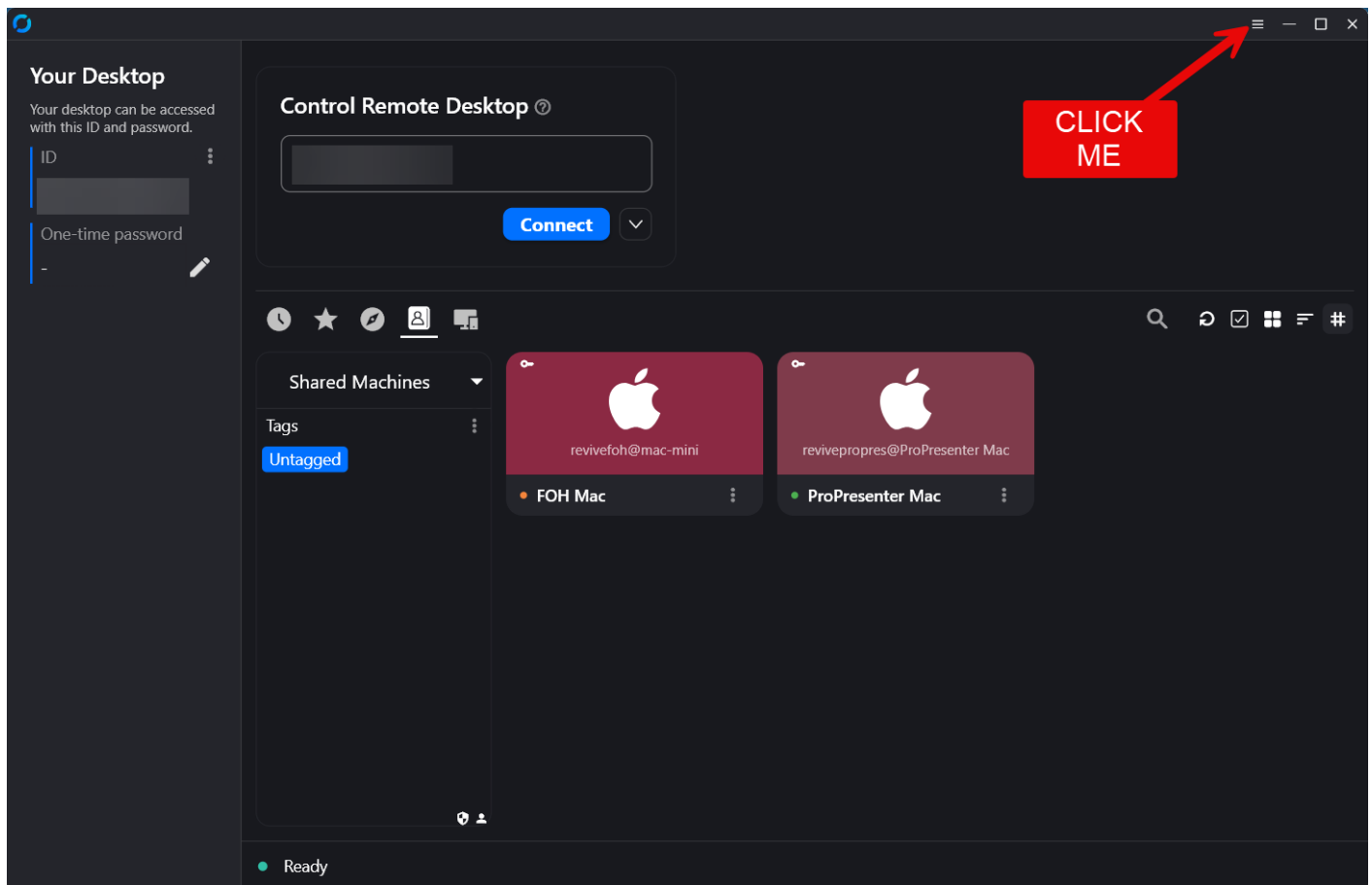
Untagged



Ready

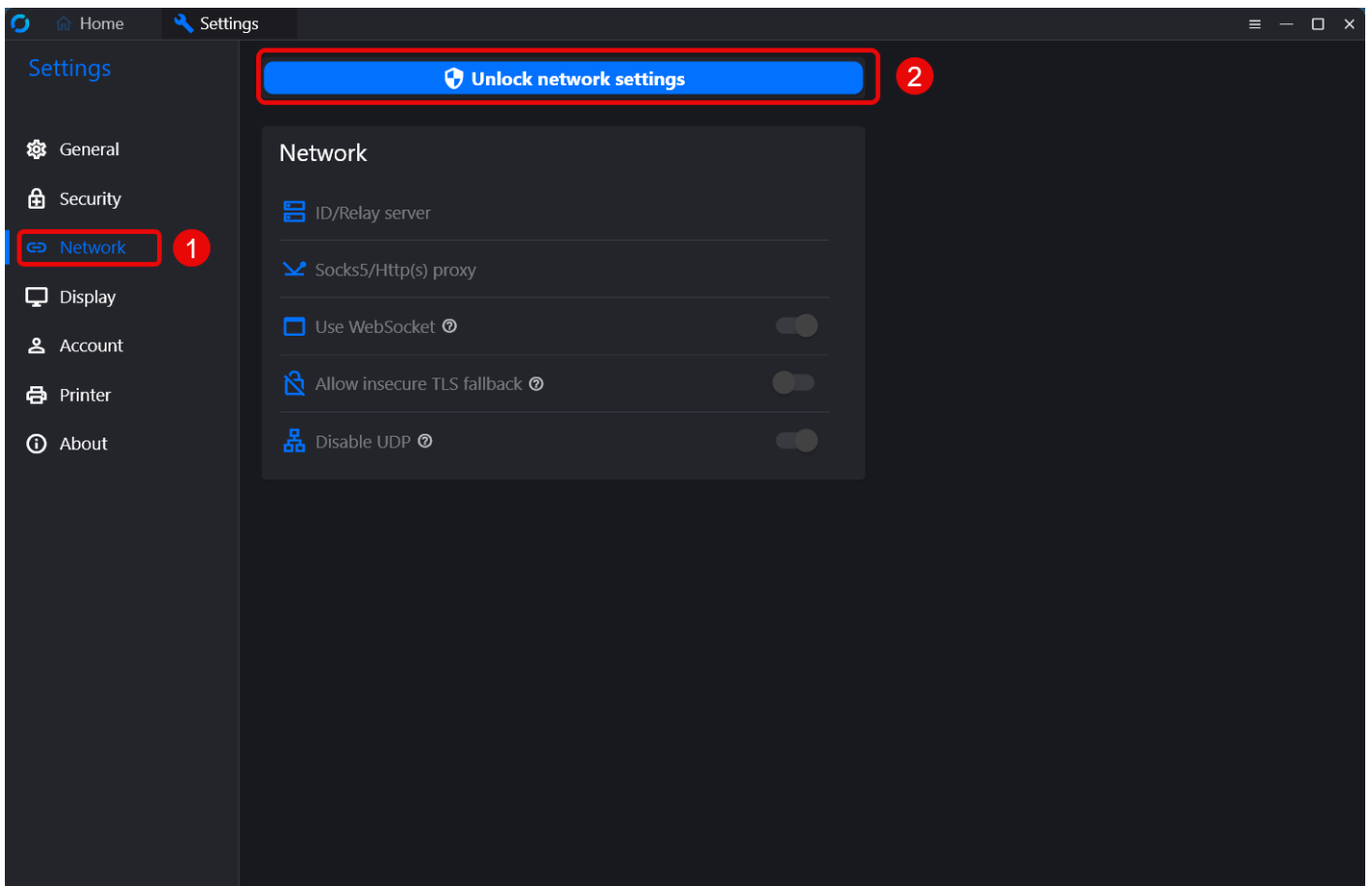
Step 4

In order to log into you created, you'll first need to configure the network settings. This will only be done once, so don't worry about the complexity. Navigate to the hamburger menu in the top right corner.



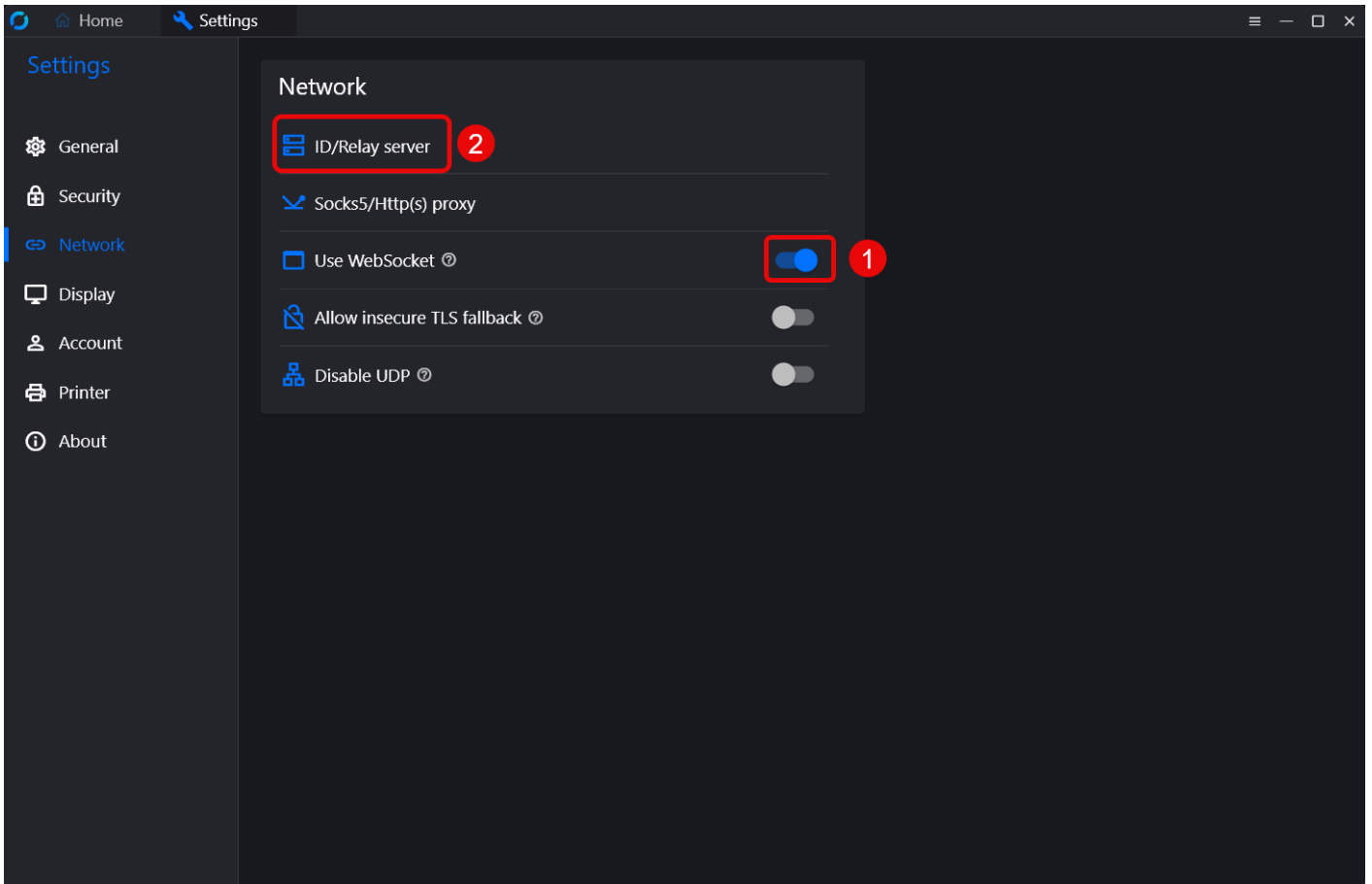
Step 5

Navigate to the Network tab on the left-hand side, then unlock the settings by typing in your computer password



Step 6

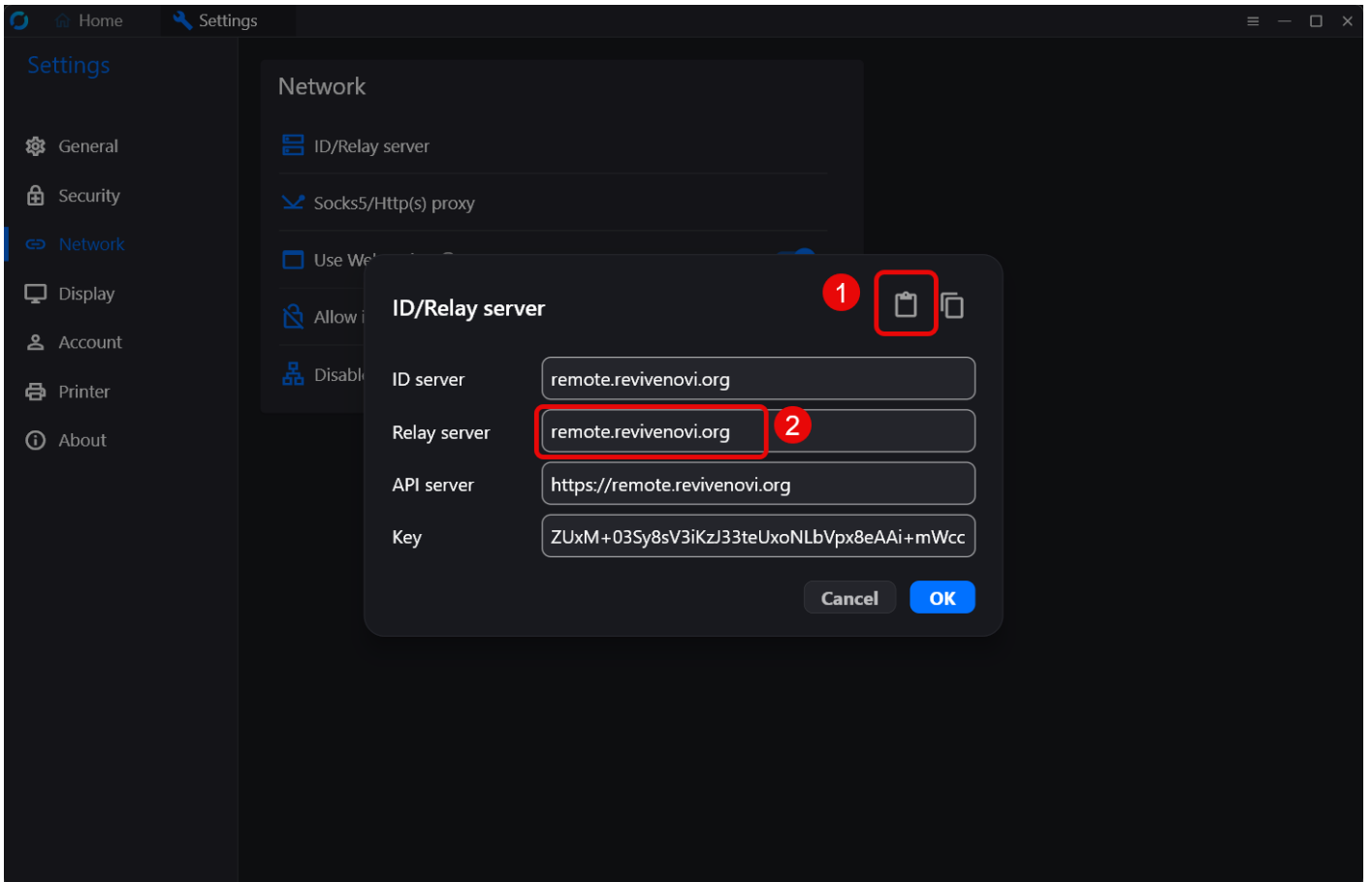
Go ahead and toggle the *Use WebSocket*, then navigate to the ID/Relay server section.



Step 7

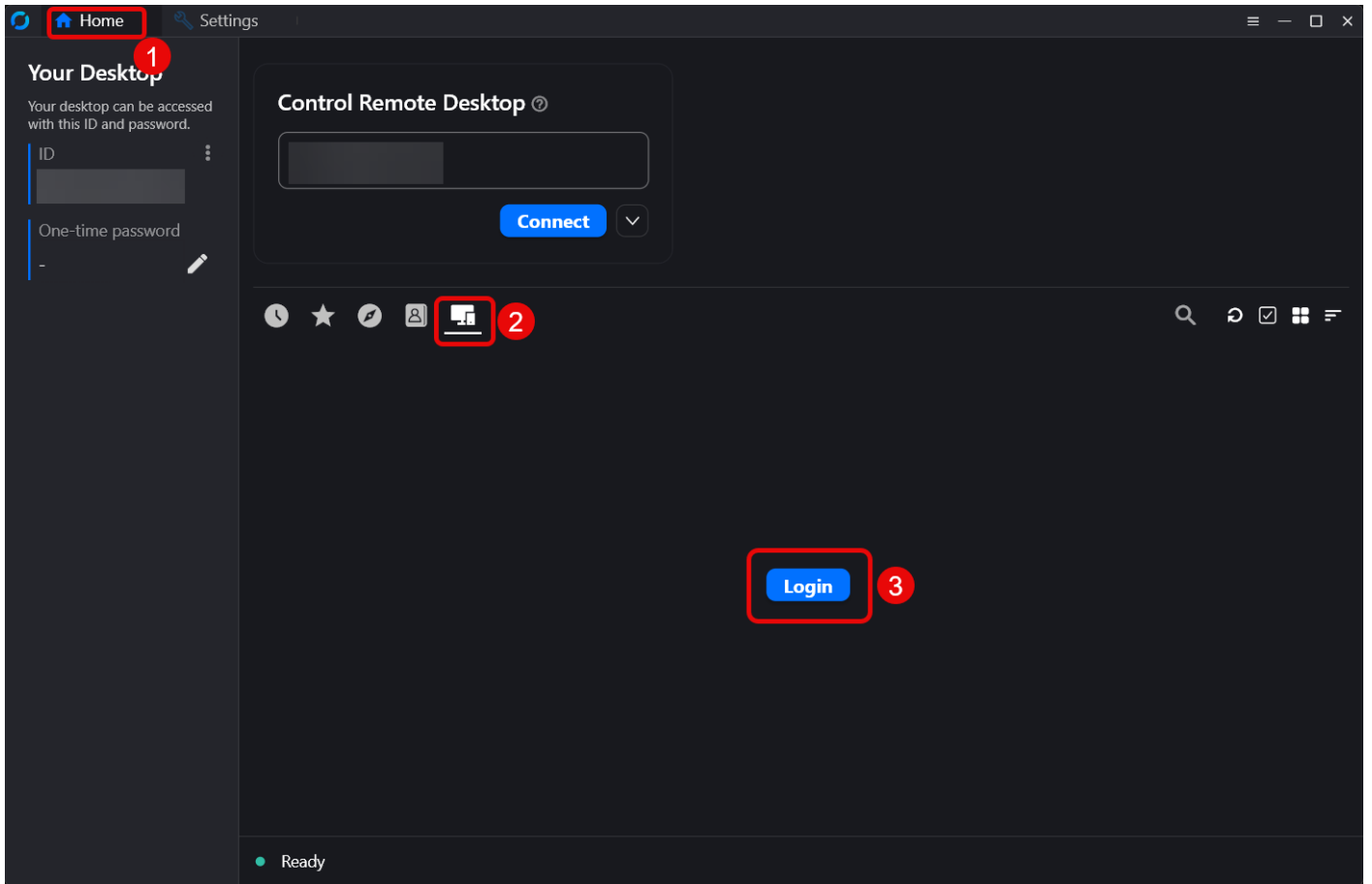
Next, copy the string of characters below. Go ahead and click on the clipboard symbol on the top right-hand corner. This feature will automatically configure your machine. Once the information has been added, fill in the relay section by copying the information from the ID server section. They should match. Then click OK.

```
9JyZy9mLpZ3buVmdpZXZy5SZ09WblJ3LvozcwRHdoJiOikGchJCLi0TU0x2YjdVbrkWQBVG04Bn  
VixkTvhXVIR3MzokeLI2MWNHO5N1MwsST4VIWiojI5V2aiwilnJ3bukmdv5WZ2lmdlJnLIR3btVmci  
ojl0N3bojye
```



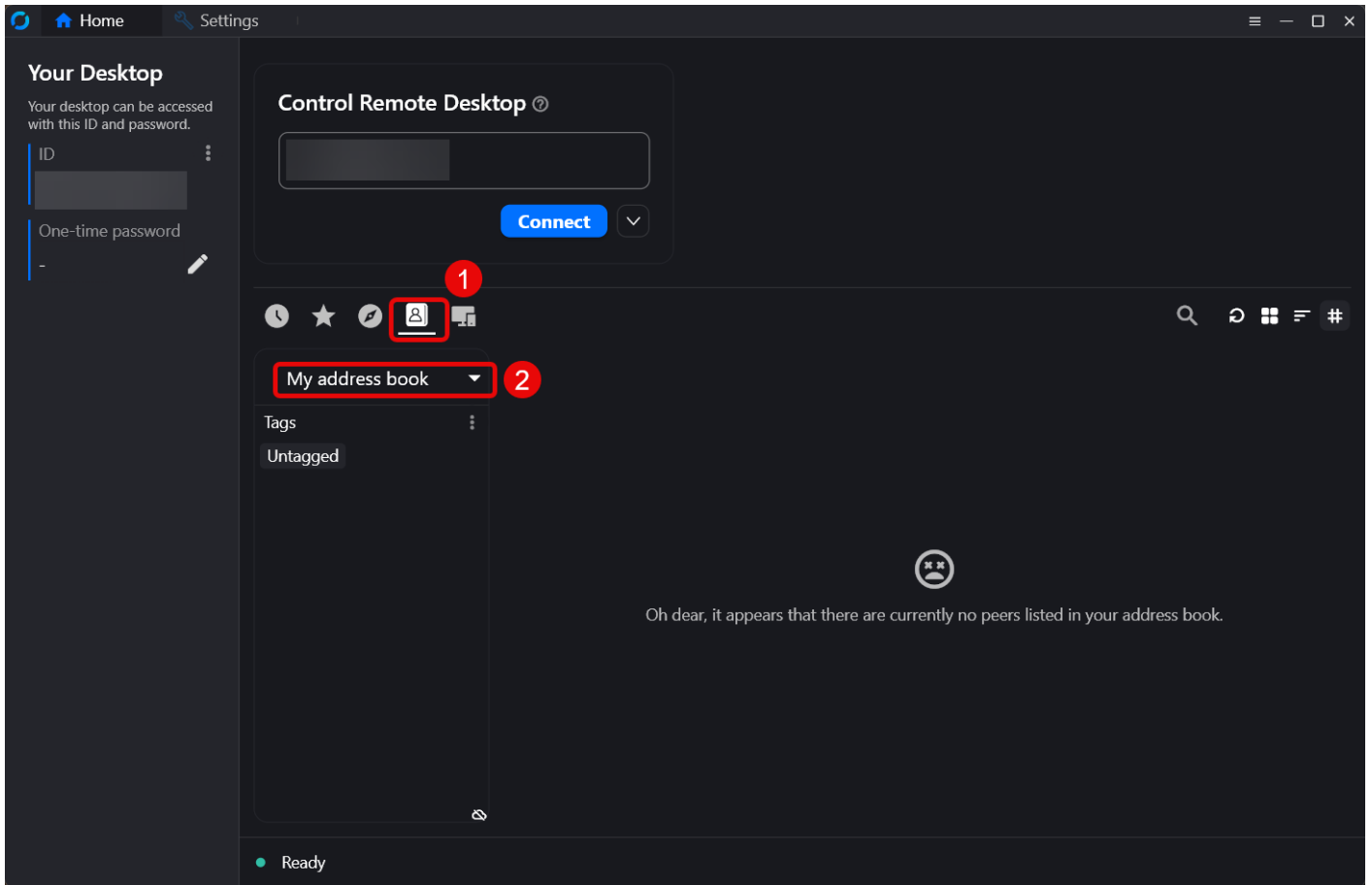
Step 8

Click the Home tab at the top of the window to go back to the main window. Then tab over to the login page at the bottom. Click login and you'll be prompted to log again, using Authentik.



Step 9

Once logged in, go back to the desktop software and click on the Address book. Inside the window, pull down the section where your address book is and select Shared Machines. If you've been given permission, you should see the machines there, ready for you to use.



Step 10

Click the 3 dot menu, select Connect and you should be good to go! Enjoy!

Home Settings

Your Desktop

Your desktop can be accessed with this ID and password.

ID
[Redacted]

One-time password
-

Control Remote Desktop

[Redacted]

Connect

Shared Machines

Tags
Untagged

FOH Mac

ProPresenter Mac

Connect 154085907

- Transfer file
- View camera
- Terminal (beta)
- TCP tunneling
- Always connect via relay
- Create desktop shortcut
- Rename
- Change password
- Edit note
- Add to address book
- Exit in
- Delete

Ready